

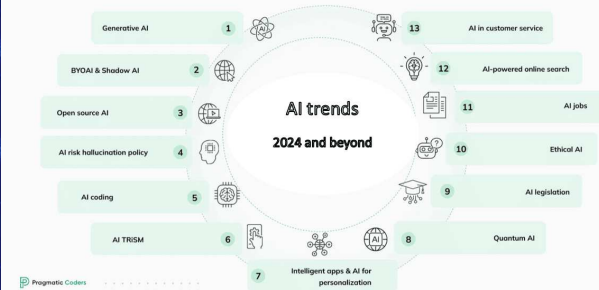
Artificial Intelligence Safety Risks: An Infographic Analysis

Introduction

From generative AI shaking things up to quantum AI opening new doors, the future's looking tech-challenging!

This analysis aims to provide insights into understanding AI safety risks.

Robustness, assurance, and specification are key areas of AI safety that can guide Artificial Intelligence development.



AI Safety Risks Overview

AI **safety risks** encompass:

**ETHICAL DILEMMAS
&
UNINTENDED CONSEQUENCES.**



Understanding these risks is essential for responsible AI development - to be presented in the next slides.





Ethical Considerations

Ethical considerations in AI development include:



Privacy protection



Bias mitigation



Ensuring **transparency** in decision-making processes



Unintended Consequences

AI systems may lead to **unintended consequences** such as **algorithmic biases**: misinformation, engineered pandemics, power concentration, surveillance and **unforeseen impacts on society**: discrimination, unreliability, loss of control.



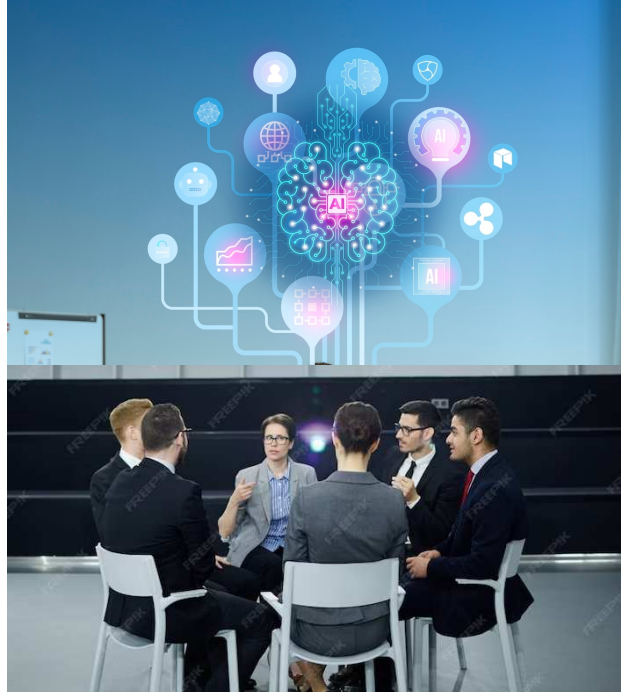
Proactive measures are necessary to address and prevent these issues: Regulatory frameworks

Regulatory Framework

Establishing a robust regulatory framework is crucial for mitigating AI **safety risks**.



Collaboration between: Governments, Industry, and experts is essential for effective regulation.





Responsible AI Development

Promoting responsible AI development involves:

- ★ ethical guidelines
- ★ rigorous testing
- ★ ongoing evaluation of AI systems



This approach is vital for mitigating AI safety risks.

Other responsible AI deployment strategies may include: accountability mechanisms, robust safeguards, feedback loops and continuous improvements.





Public Awareness



Raising public awareness about AI **safety risks** fosters informed discussions and encourages proactive measures.



Education and open dialogue are key to addressing these challenges.



Collaborative Efforts



Collaboration among **stakeholders** including researchers, policymakers, and industry leaders is essential for addressing AI **safety risks**.

Collective expertise is crucial for effective solutions



Local & Global regulatory functions need to be established in order to ensure monitoring of accelerated growth of AI.



Future Considerations

Continued research and adaptation of AI **safety protocols** will be necessary as technology advances. Anticipating future challenges is essential for long-term AI **safety**.



Safeguarding the Future

Conclusion

Mitigating AI **safety risks** requires a multi-faceted approach encompassing ethical considerations, regulatory frameworks, and collaborative efforts.



Embracing, maintaining and adapting responsible AI development is essential for a safer and more sustainable future.



Thank you

Do you have any questions?

papageanina.m@gmail.com

+40752750573

<https://www.linkedin.com/in/geanina-mihaela-papa-76506a166/>

@geanina_papa 